

# Lassen National Forest Discussion Draft Kimshew Point NE



Jul 27, 2007

## System Roads and Trails

- Current Operational Maintenance Level**
- 0 - Not Maintained by FS, NO Public Right-of-Way
  - - - 1 - BASIC CUSTODIAL CARE (CLOSED to ALL TYPES OF MOTOR VEHICLES)
  - 2 - HIGH CLEARANCE VEHICLES, Open to All Vehicles
  - 3/4/5 - Open to Street-Legal Vehicles Only
  - Roads Already Decommissioned
  - Roads Planned to be Decommissioned under other NEPA
  - NF System Trails - Open to Motorized Vehicle Use
  - NON-MOTORIZED TRAIL

- COUNTY ROAD Open to Street-Legal Vehicles Only
- STATE HIGHWAY Open to Street-Legal Vehicles Only

## Proposed Designation

- OHV Trails Considered, Not Proposed
- Small Areas Open to Motorized Vehicle Use

For complete proposal symbology, see supplemental legend

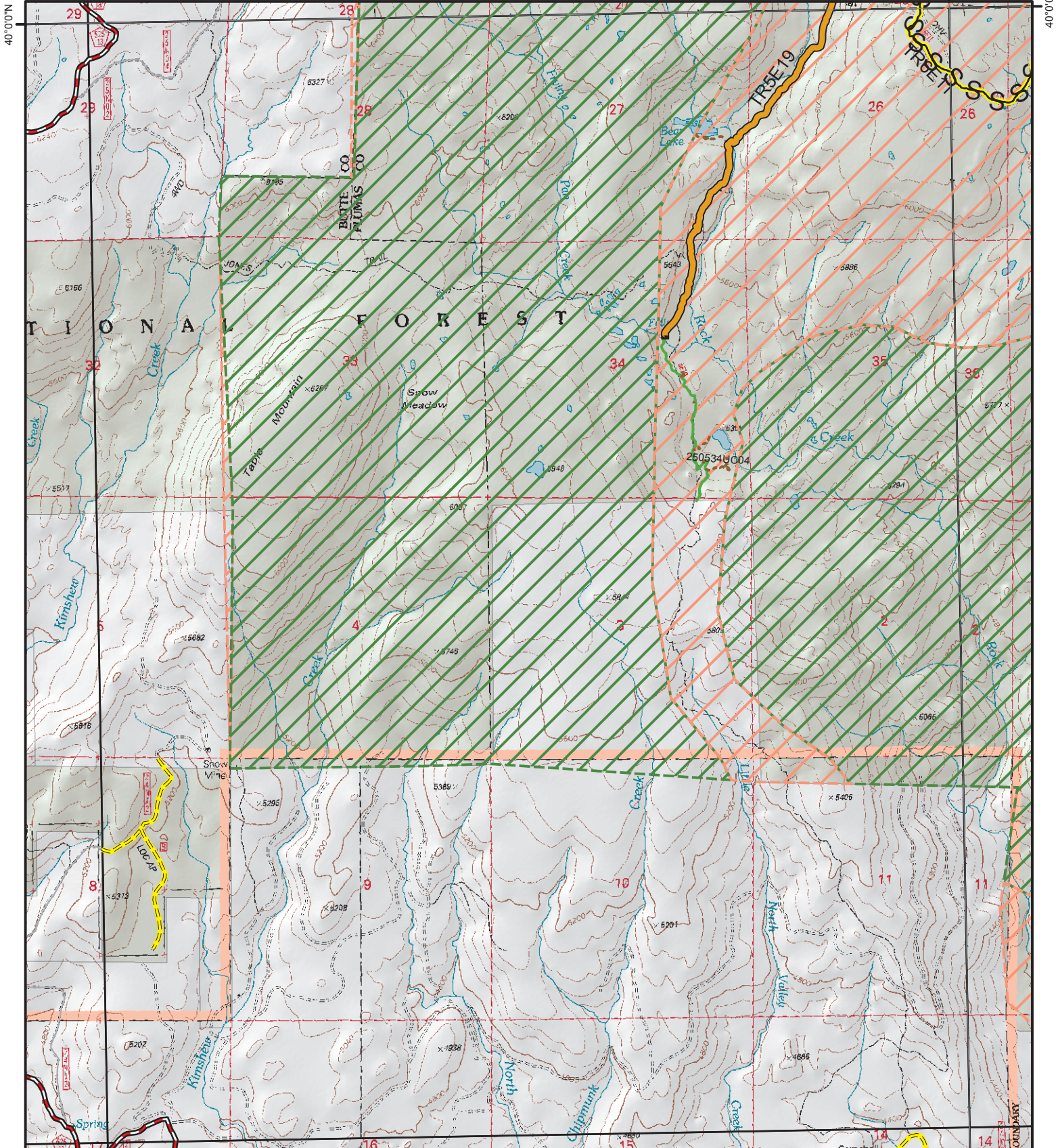
## Planning Areas

- RESTRICTED to Designated Routes only
- PROHIBITED

## LAND OWNERSHIP

- National Forest Land

0 0.25 0.5 1 Miles



121°22'30"W